



## KEY CHALLENGES

- ✓ To communicate effectively and efficiently with blind/low vision and deaf/hard of hearing staff and students in emergencies.
- ✓ To communicate routine daily information, such as announcements, class changes and activities to all staff and students at the same time.
- ✓ To facilitate learning and communication via disparate systems (e.g. fire alarm, building access control, building automation, etc.).

## SOLUTIONS

- ✓ Installation of voice and text-based signage, including LED scrolling signage with speakers and flasher lighting systems, computers, cell phones and LCD panels for crisis and routine communication—a solution specified for deaf/hard of hearing and blind/visually impaired students as well as any student population.
- ✓ Campus-wide implementation of PC Alert pop-up messaging
- ✓ Interface with cell phones for verbal and text communication
- ✓ LCD panels for both visual and audio communication in common areas
- ✓ Interface between disparate fire alarm, building access control and building automation systems and automatic messaging or flasher-light system.
- ✓ Signage with voice and visual synchronized time

## a case study in EDUCATION

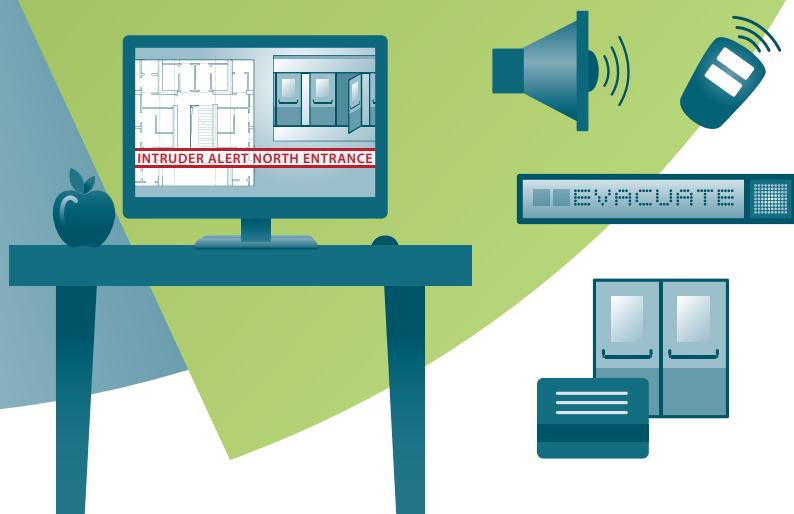
*"The focus is to ensure our ability to communicate with every one of our students and staff quickly and all at once in times of crisis. Their needs are different, so Layered Solutions has helped us create a combination of visual and voice systems over time that fits us perfectly."*

- KEVYN BROWN, DIRECTOR OF FACILITIES  
COLORADO SCHOOL FOR THE DEAF AND THE BLIND

## ABOUT COLORADO SCHOOL FOR THE DEAF AND THE BLIND

With more than 140 years of history, The Colorado School for the Deaf and the Blind (CSDB) has a legacy of educating children, birth to age 21, who are blind/low vision and/or deaf/hard of hearing. The school is a state-funded facility within the Colorado Department of Education that serves students, staff and families in communities throughout Colorado.





# IT'S SAFE TO LEARN

- LED Signage & Visual PA
- Contact Closures
- Real-Time Building Map
- Wireless Panic Buttons

## FEATURED PRODUCTS

### LED SIGNAGE AND VISUAL PA

LED Signage and Visual PA signs support POE displays with SIP audio and flashing lights as well as multiple hardware manufacturers. Address staff and student body with text to speech or spoken announcements from any phone and combine with corresponding visual alerts.

### CONTACT CLOSURE INTERFACE

Contact Closure Interface launches messages to any supported devices, in this case from doorbells to PCs, mobile devices, LED and Visual PA signs. Support for 2, 8 or 16 port (input and output) models.

### WIRELESS PANIC BUTTONS

Wireless Panic Buttons come in 1, 2 or 4-button models and are pre-programmed with any message(s).

## RESULTS

- ✓ Staff and students receive emergency alerts and crisis communication immediately and at the same time with solutions that combine both visual and voice notifications.
- ✓ Everyone receives daily announcements, class changes and information on scheduled activities at the same time.
- ✓ The school adds layers of communication and functionality as time and budget allow, without concern for whether the systems will work together. New solutions, such as a building access system that notifies staff and students with voice and visual alerts when doorbells are pushed, integrate with existing systems such as the fire alarm panel and building automation.
- ✓ With equal access to information, students are empowered to act, feel confident and become self-determined and independent citizens.

*Layered Solutions is an experienced emergency management solutions provider for clients in education, healthcare, industrial, commercial and government, integrating technology that streamlines and simplifies emergency, safety and routine communication.*

LSI CERTIFIED PARTNER



Contact: [info@comtecsystems.net](mailto:info@comtecsystems.net)



**LayeredSolutions**

INTEGRATE. COMMUNICATE. PROTECT.

[layeredsolutionsinc.com](http://layeredsolutionsinc.com)